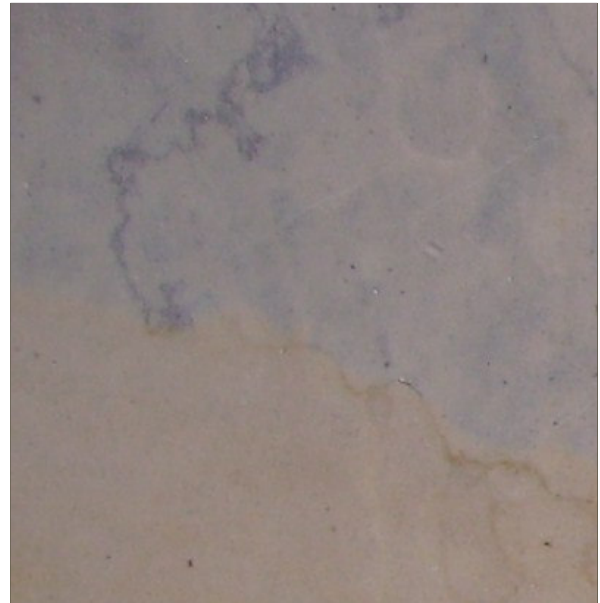




**dimpomar**  
ROCHAS PORTUGUESAS, LDA.



**ATAÍJA MIX**  
(beige & grey limestone)

**GENERAL INFO**

<b>Material Type:</b>	Limestone
<b>Country of Origin:</b>	PORTUGAL
<b>Other Names:</b>	
<b>Petrographic Description:</b>	N/A
<b>Macroscopic Description:</b>	N/A

**PHISICAL-MECHANICAL PROPERTIES**

<b>Compression Breaking Load:</b>	1650 Kg/cm <sup>2</sup>
<b>Compression B.L. after Freezing Test:</b>	1570 Kg/cm <sup>2</sup>
<b>Bending Strength:</b>	105 Kg/cm <sup>2</sup>
<b>Volumetric Weigth:</b>	2680 Kg/m <sup>3</sup>
<b>Water Absorption:</b>	0,4 %
<b>Apparent Porosity:</b>	0,9 %
<b>Thermal Linear Expansion Coefficient:</b>	3,9 10 <sup>6</sup> per °C
<b>Abrasion Test:</b>	2,6 mm
<b>Impact Test:</b>	35 cm
<b>Freeze-Defreeze cycles (no alteration after):</b>	96 cycles

**MICROSCOPIC PROPERTIES**

<b>Calcite:</b>	~ 99 %	<b>Quartz:</b>	< 1 %
-----------------	--------	----------------	-------

**CHEMICAL ANALYSIS**

<b>Al<sub>2</sub>O<sub>3</sub>:</b>	0,88%
<b>CaO:</b>	54,31%
<b>Fe<sub>2</sub>O<sub>3</sub>:</b>	0,15%
<b>K<sub>2</sub>O:</b>	0,07%
<b>MgO:</b>	0,26%
<b>Na<sub>2</sub>O:</b>	0,02%
<b>P.R.:</b>	42,95%
<b>SiO<sub>2</sub>:</b>	1,05%
<b>CO<sub>2</sub>:</b>	42,90%